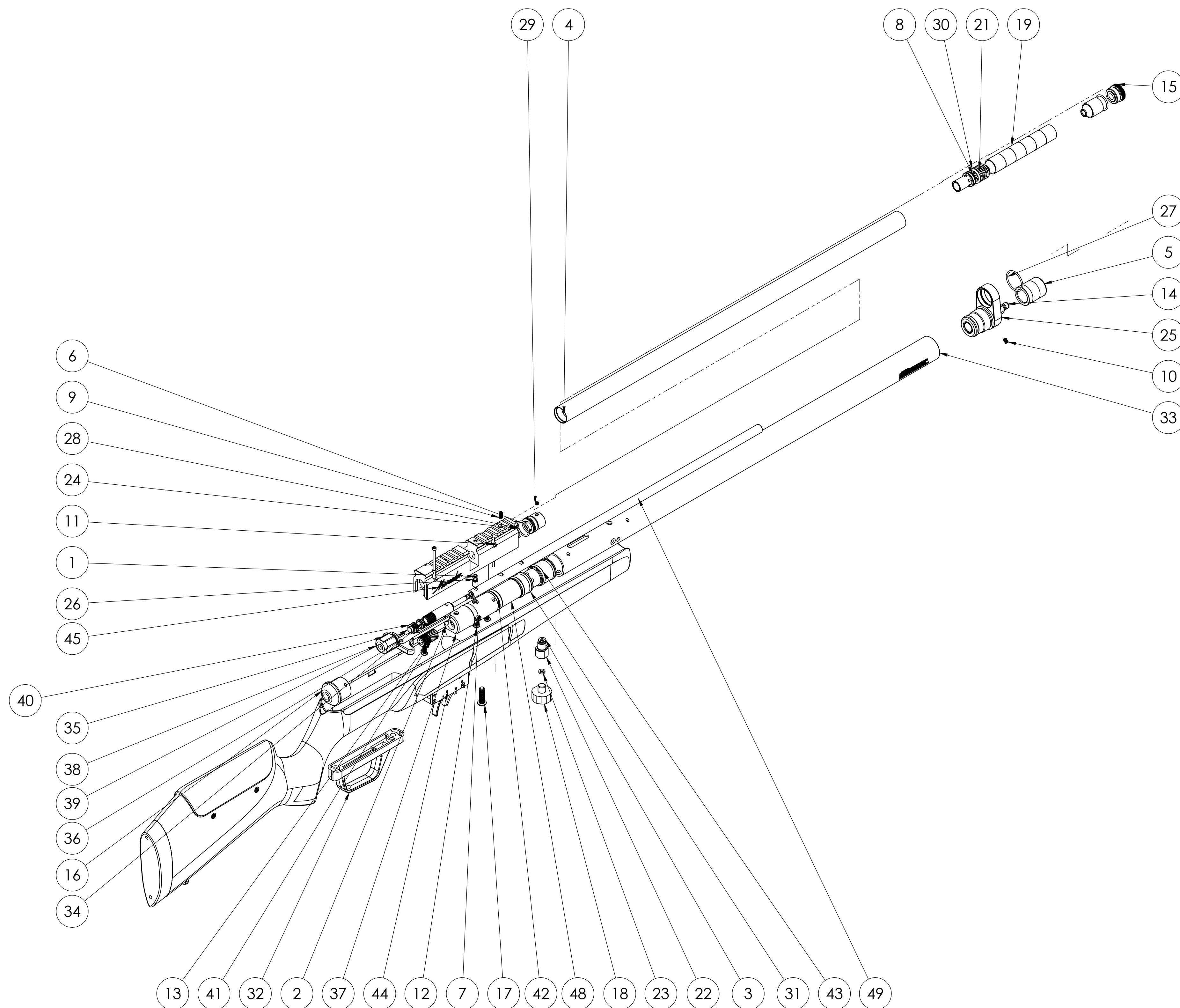


		REVISIONS		
ECN	REV.	DESCRIPTION	DATE	BY
13929	A	INITIAL RELEASE	01/14/2020	JAS
13950	B	REPLACE SAM-022 WITH SAMA022	2/13/2020	JAS
14105	C	REPLACING 2263-001 TO SAM22-022	8/7/2020	ETB
14130	D	REPLACED SAM22-006 WITH SAM22A006. REPLACED 1X 1700-018 WITH SAM-023	8/25/2020	JAS



△ D

ITEM NO.	PART NUMBER	DESCRIPTION	
1	130-036	BREECH GASKET	2
2	1700-018	STUD, BOLT	1
3	1761A023	O-Ring, #2-009	2
4	1763-005	SHROUD, BARREL	1
5	1763-011	CAP, FILL NIPPLE	1
6	1763-013	MOUNT, SHROUD	1
7	1763-019	SCREW, 10-32 X .25, SHCS	3
8	1763-020	SPACER, BARREL SHROUD	1
9	1763-021	SET SCREW, 8-32 x .375 FLTPT	2
10	1763-023	SET SCREW, 8-32 x .25 FLTPT	2
11	1763-027	SCREW, 4-40 x 1.25 SHCS	4
12	1763-035	SCREW, 8-32 x .437 BHCS	3
13	1763-038	GUIDE, HAMMER SPRING	1
14	1763-101	FILL ADAPTER ASSEMBLY	1
15	1764-010	CAP, SHROUD	1
16	1764-012	CAP, PRESSURE TUBE	1
17	1764-029	SCREW, 1/4-20 x .875 BHCS	1
18	1764-033	GAUGE, STRAIGHT	1
19	1764-060	BAFFLE	7
20	1764-064	DAMPENER, RESONANCE	1
21	1764-068	SPRING, BAFFLE	1
22	1764-080	GAUGE ADAPTER, STRAIGHT	1
23	1764-081	VITON WASHER, .15ID X .312 OD	1
24	190B-008	O-RING	1
25	2563-008	BARREL BAND	1
26	2563-014	SLEEVE, TRANSFER PORT	1
27	2563-061	O-RING, #2-022	1
28	397-036	O-RING, #2-016, BUNA N	2
29	88-089	SET SCREW 8-32 x 125 CUP HEX HD	1
30	JTX-080	O-RING, 2-113	1
31	MR-100	MR-100_REGULATOR_ASSEMBLY	1
32	MR-102	WOOD STOCK ASSEMBLY	1
33	SAM-001	TUBE, RESERVOIR	1
34	SAM-009	BOLT SPRING	1
35	SAM-012	CHARGE HANDLE	1
36	SAM-014	0.188 PLASTIC BALL	1
37	SAM-015	HAMMER	1
38	SAM-050	BOLT BUFFER TUBE	1
39	SAM-051	BUFFER TUBE SPRING PERCH	1
40	SAM-053	BUFFER SPRING	1
41	SAM-054	SPRING, HAMMER	1
42	SAM-100	VALVE ASSY, 22	1
43	SAM-103	GAUGE PORT ASSY	1
44	SAM-105	TRIGGER ASSEMBLY	1
45	SAM-004	BREECH MARAUDER REGULATOR 22 CAL	1
46	SAM22A006	BOLT, .22 CAL, FULL PROBE	1
47	SAM22-101	CLIP ASSEMBLY, .22 CAL	1
48	SAMA022	SPACER	1
49	SAM22-022	BARREL, 22CAL	1
50	SAM-023	DOWEL PIN, .2188OD X .5L, 4140	1

△ D

△ B

△ C

△ D

② FINISH:

① MATERIAL:

NOTES: UNLESS OTHERWISE SPECIFIED

NOTICE: THE INFORMATION SHOWN HEREON IS PROPRIETARY. CROSMAN CORPORATION CLAIMS EXCLUSIVE RIGHT OF USE. REPRODUCTION OR DISTRIBUTION WITHOUT WRITTEN APPROVAL BY CROSMAN CORPORATION IS STRICTLY PROHIBITED.

UNLESS OTHERWISE SPECIFIED
DIMENSION ARE IN INCHES
.XX +/- .01
.XXX +/- .005
ANGULAR +/- 1 Deg
SURFACE FINISH 63 RMS MAX
DIM. & TOL. PER ASME Y14.5M-2009

Crosman Corporation
ROUTES 5 & 20
BLOOMFIELD, NY 14469

DRAWN BY JAS	PART NAME	SEMI-AUTO MARAUDER ASSY
DATE 0/16/2020	DWG. NO.	SAM22-999
SIZE D	SCALE --	REV D